

# CALLED TO CARE



---

A CAMPAIGN TO  
EXPAND INPATIENT  
HOSPICE SERVICES IN  
NORTH WHATCOM  
COUNTY



# CHCC: Uniquely nonprofit, mission-driven care



Christian Health Care Center is a faith-based, nonprofit organization that has served Whatcom County since 1956, primarily the rural communities of Lynden, Everson, Nooksack, Sumas, Custer, Ferndale, Birch Bay and Blaine.

Founded to meet a local need, CHCC is locally managed and supported by the community it serves. Today, approximately 225 team members provide skilled health care with compassion and love in Christ's name.

Generations of families have trusted CHCC to care for their loved ones during life's most fragile moments.

National recognition for quality care reflects the experience, commitment and professionalism of the staff who serve here. This hospice project is led by an organization with deep roots, proven capacity and a long-standing calling to care for the community.



# The need in North Whatcom County

In North Whatcom County, families facing end-of-life care have limited options. Hospice at home can be meaningful, but it is not always safe or sustainable. Medical needs do not pause overnight, symptoms can escalate quickly and families can be left managing complex care without 24/7 clinical support.

For some, the only alternative for inpatient hospice is traveling to Bellingham, creating distance when being close to loved ones matters most. This adds stress, isolation and logistical challenges during an already emotional time.

The Hospice Suites at CHCC will fill this gap by providing compassionate, faith-based inpatient hospice care close to home. Families will have peace of mind knowing their loved one is surrounded by skilled caregivers day and night in a calm, supportive environment that is designed for dignity, comfort and privacy.

---

# Data based, addressing a gap in care

Washington State Department of Health [data](#) shows that hospice care is a common and growing need. Hundreds of Whatcom County residents require hospice services each year, and many families face difficult choices when around-the-clock medical care is not available at home.

- Based on state data, about 55% of older adults and 23% of younger adults use hospice before death.
- When applied to Whatcom County death records, that equals roughly 1,000 residents who need hospice care each year.
- With nine hospice suites, it is estimated that CHCC can serve more than 100 individuals each year at life's end, depending on length of stay.
- The Hospice Suites at CHCC fill a gap in care and create space for hundreds of families to experience peace and support during an important life transition.





# Established partnerships benefit local families

Christian Health Care Center has a long-standing partnership with PeaceHealth Whatcom Hospice to support residents and patients who qualify for inpatient hospice care. Under this established relationship, CHCC provides skilled nursing care through its staff, while PeaceHealth offers additional clinical support, education and specialized hospice services under an existing contract.

The new hospice suites will operate within this same trusted structure. CHCC will care for individuals admitted specifically for hospice services as well as current residents who transition to hospice care. CHCC plans to offer inpatient and respite hospice services under current licensure and the existing hospice contract.

This partnership ensures continuity, high-quality coordination and a designated, welcoming space where patients and loved ones can experience privacy, comfort and compassionate care at the end of life.



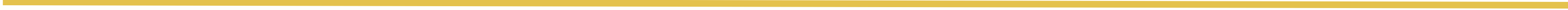
# Expanding hospice care at CHCC

In 2025, CHCC provided hospice care in shared rooms to 59 individuals. With the addition of nine private suites, CHCC expects to serve more than 100 additional individuals each year at life's end, depending on length of stay.

CHCC will continue to provide hospice care throughout the facility, including in shared rooms, with the same high standard of compassionate care.

The addition of private hospice suites will expand CHCC's capacity for care while giving families another option for end-of-life support.

This expanded option allows CHCC to meet different needs while continuing to serve all residents with dignity and compassion.



- The only nonprofit skilled nursing facility north of Stanwood, with deep roots in the community.

- Located in Lynden, serving rural communities across North Whatcom County.

- Provides faith-based care for those who want it.

- Care provided by experienced, award-winning and trusted professionals who live and work here.

- Sacred Transitions program that pairs trained volunteers with residents during the end-of-life stage.



What makes  
The Hospice  
Suites at CHCC  
different?



## CHCC FOUNDATION BOARD MEMBERS



Nellie Vander Kooi



Vincent Buys



Jannette Van Dyken



Nancy Hendricks



Jim Weinert



Karen Kildall Occhiogrosso

# CHCC Foundation

A local foundation board ensures decisions are guided by people who know the community and understand its needs. These board members bring trusted relationships, lived experience and firsthand knowledge of the care CHCC provides.

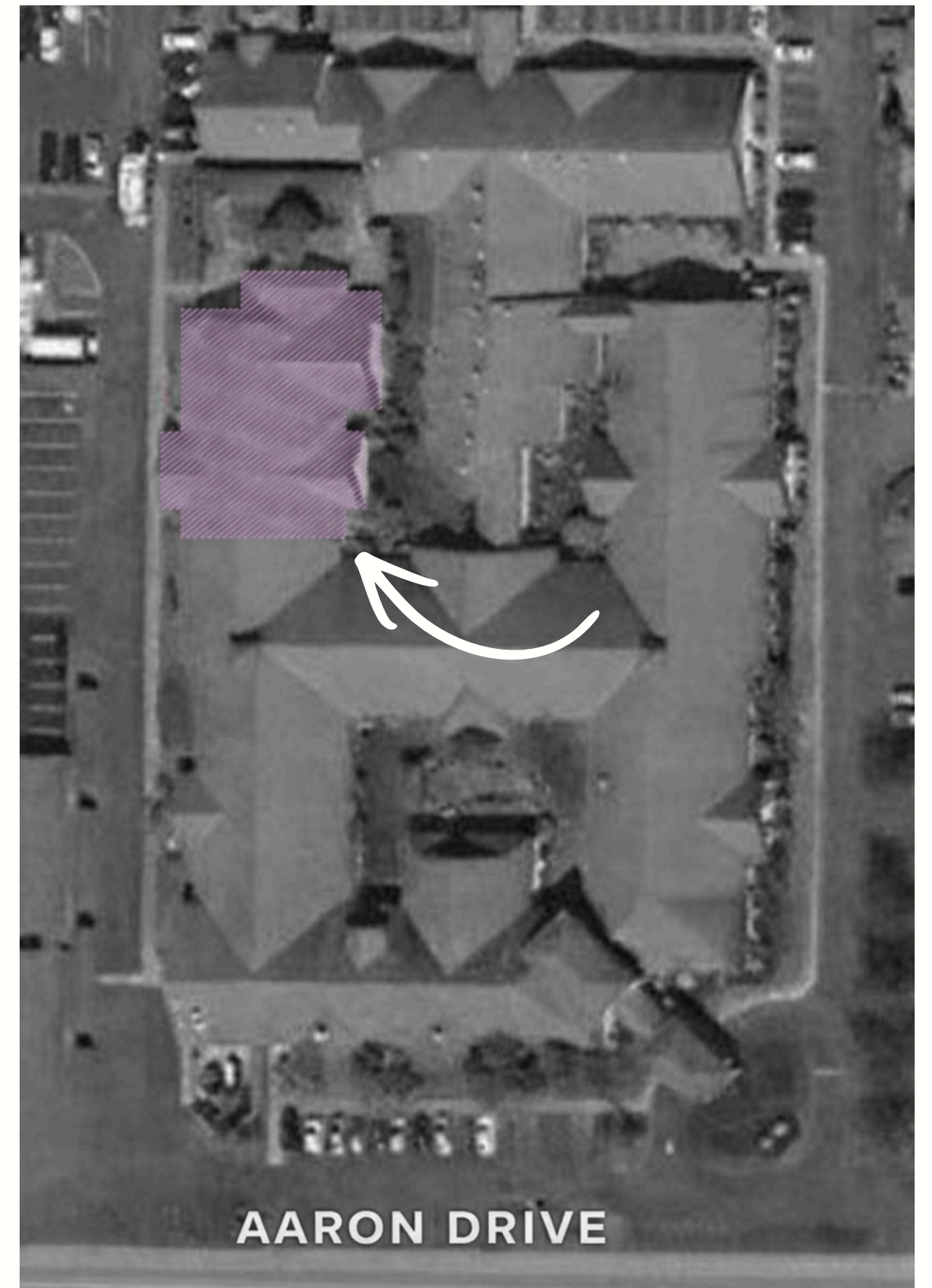
All CHCC foundation board members have personal connections to the organization and have witnessed its impact on residents and families.

Their leadership helps ensure philanthropic decisions align with established policies, donor intent and the foundation's mission while strengthening care for future generations.

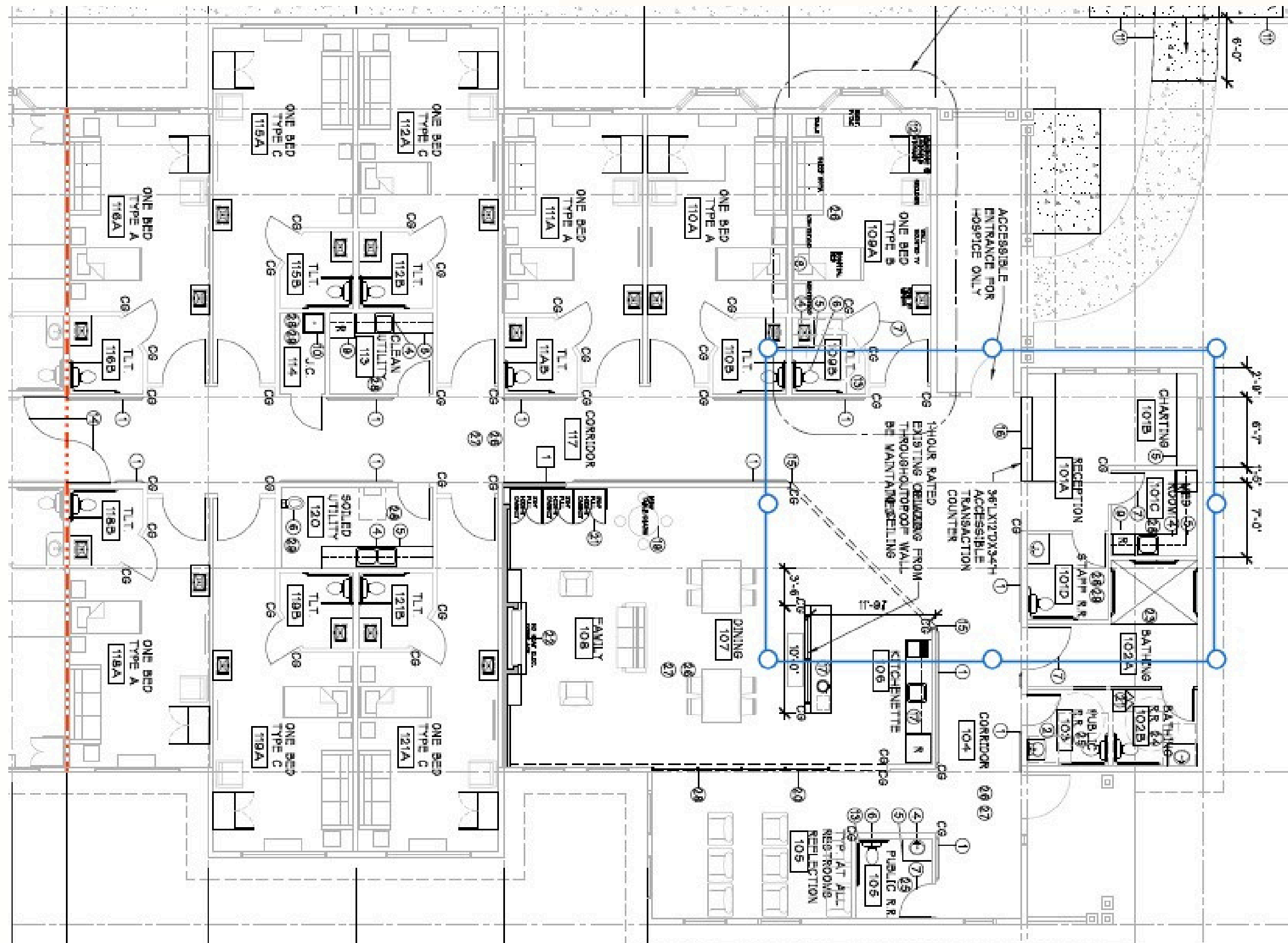


# Vision: A hospice environment shaped by peace and presence

Your donation will help transform an underused portion of CHCC's existing building into a dedicated hospice environment where patients and families can experience a private, peaceful end-of-life experience.



# Progress drawings



These progress drawings illustrate the planned footprint and layout of The Hospice Suites at CHCC, offering a view of how the space is designed to support residents, families and care teams.



# Nine private suites

The project includes nine private hospice suites. Each suite will include a patient bed, sleeper sofa, recliner, television, nightstand, wardrobe and half bath.

Families will have space to sit in vigil, rest and remain close throughout the final days. These suites offer CHCC's signature care and hospitality along with a level of privacy that is not often available in shared care settings.



EXISTING CONDITIONS



EXISTING CONDITIONS



ARCHITECTURAL RENDERING

# Spaces that support gathering and reflection

---



EXISTING CONDITIONS

Beyond the private suites, you'll find thoughtfully designed shared spaces. A gathering room offers a kitchenette, dining tables, a children's table and comfortable lounge seating, creating a place for meals, conversation and rest.

A reflection room provides space for prayer, silence or quiet conversation.

The Hospice Suites at CHCC also feature a private entrance and access to a sanctuary garden, offering a peaceful place to breathe fresh air and immerse in nature.



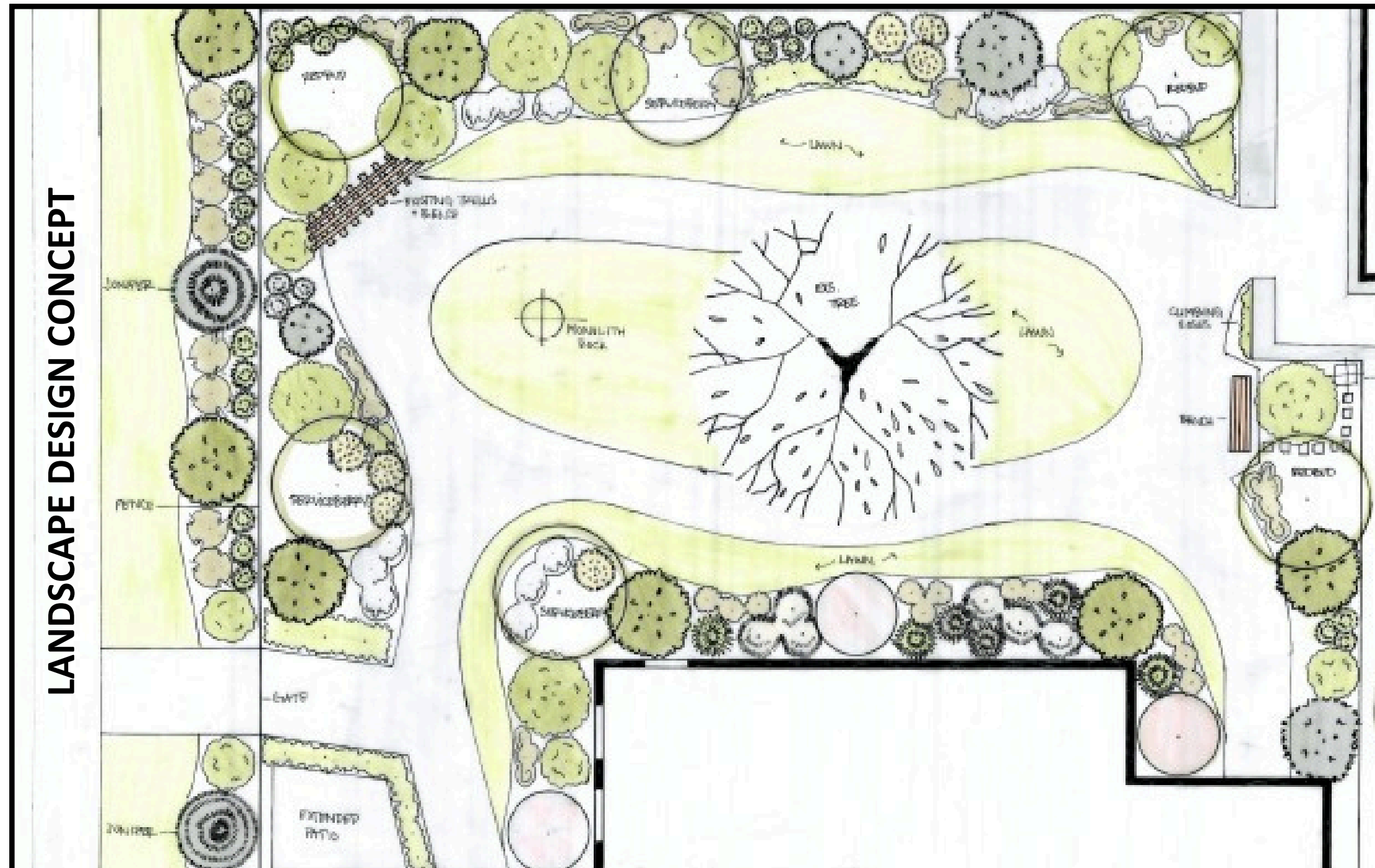
ARCHITECTURAL RENDERING

# An environment designed for comfort

These shared spaces create an environment where loved ones are comforted by a mission rooted in compassion and supported by experienced staff who are called to care.



# An accessible sanctuary garden



The Hospice Suites at CHCC will also feature a private entrance and access to a sanctuary garden, offering a peaceful place to breathe fresh air and immerse in nature.



EXISTING CONDITIONS

# Translate generosity into care

Through CHCC's Called to Care campaign, individuals and businesses can help establish and sustain hospice care in North Whatcom County.

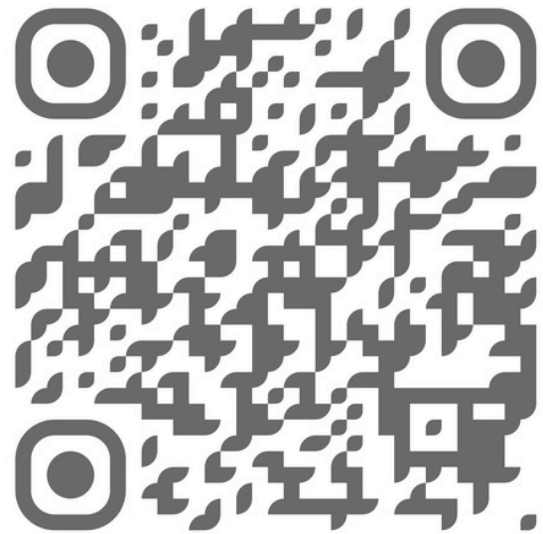
In answering this call to give, individuals and businesses will help ensure hospice care is available close to home, guided by faith, professionalism and a deep commitment to the community CHCC has served for generations.



# Join us in answering the call to care

## Make a gift today

Contributions can be made online or by mailing a check to Christian Health Care Center, 855 Aaron Drive, Lynden, Washington 98264. Snap this code or visit [chcclynden.org/about/foundation](http://chcclynden.org/about/foundation).

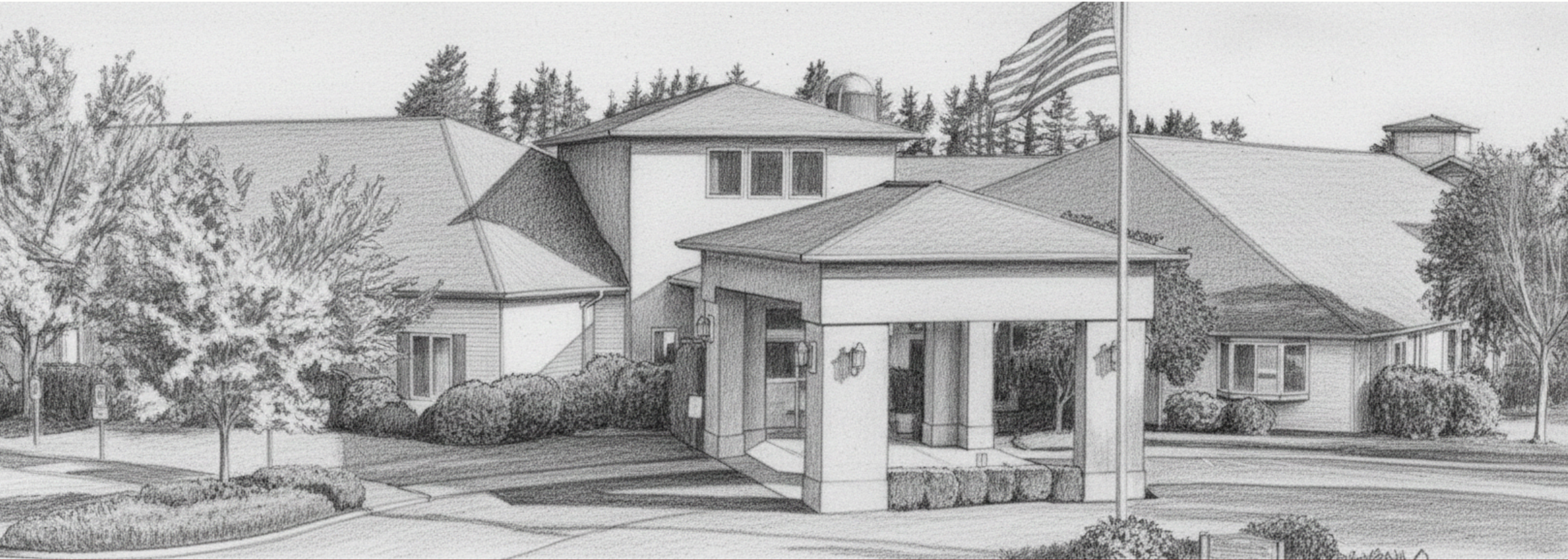


## Discuss naming rights and legacy gifts

For legacy gifts of \$50,000 or more, please contact Christian Health Care Center's executive director administrator to discuss naming rights and other giving options that honor loved ones while supporting care for generations to come.

Tonja Myers  
Executive director administrator  
Christian Health Care Center  
360-354-4434  
[tamyers@chcclynden.org](mailto:tamyers@chcclynden.org)

Your support truly makes a difference at life's most fragile moments.



THANK YOU

As a Washington State 501(c)(3) qualified charity, all gifts may qualify for a variety of tax deductions. EIN: 91-0645439